

CAMARREN COVE ESTATES SUBDIVISION

PHASE 2
 LOTS 64-71, 75, 85-95
 IN NORTH OGDEN CITY

TAXING UNIT: 10

PREFIX: 16-078

SCALE 1" = 50'

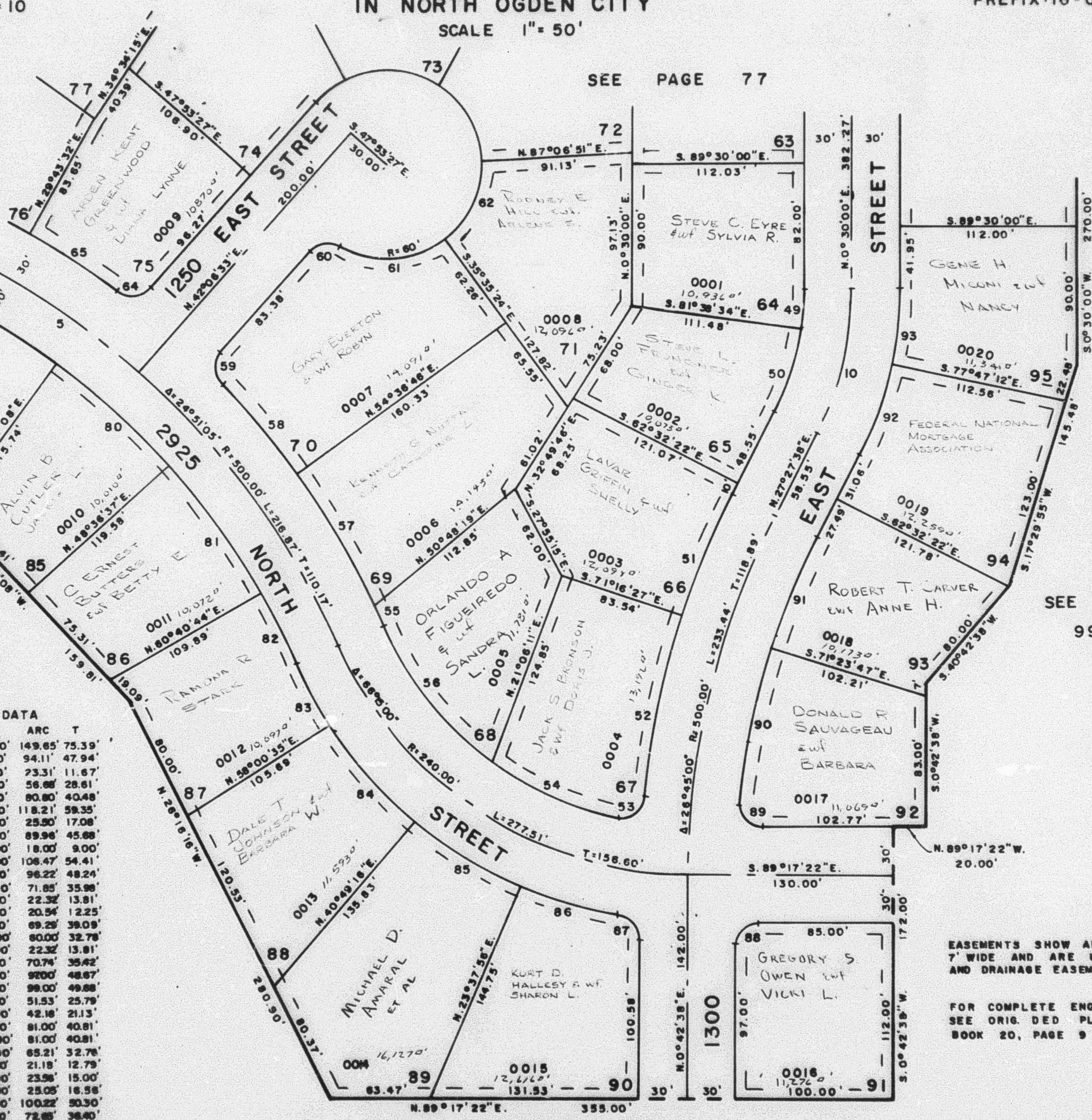
SEE PAGE 77

SEE PAGE 75

SEE PAGE 49-4

SEE PAGE 99

NO	A	R	ARC	T
5	17°08'55"	500.00'	149.65'	75.39'
10	28°57'38"	200.00'	94.11'	47.94'
49	7°51'28"	170.00'	23.31'	11.67'
50	19°06'12"	170.00'	56.68'	28.61'
51	8°44'05"	530.00'	80.80'	40.48'
52	12°46'44"	530.00'	118.21'	59.35'
53	9°25'12"	15.00'	25.50'	17.08'
54	24°32'38"	210.00'	89.96'	45.68'
55	1°58'45"	530.00'	18.00'	9.00'
56	29°02'59"	210.00'	108.47'	54.41'
57	10°24'07"	530.00'	96.22'	48.24'
58	7°46'08"	530.00'	71.85'	35.96'
59	8°15'49"	15.00'	22.32'	13.81'
60	7°27'47"	15.00'	20.54'	12.25'
61	88°09'44"	80.00'	69.28'	38.09'
62	57°17'45"	80.00'	80.00'	32.78'
64	88°15'50"	15.00'	22.32'	13.81'
65	7°38'51"	530.00'	70.74'	35.42'
80	11°48'29"	470.00'	92.00'	48.67'
81	12°07'07"	470.00'	99.00'	49.68'
82	6°18'54"	470.00'	51.53'	25.79'
83	8°57'03"	270.00'	42.18'	21.13'
84	17°11'19"	270.00'	81.00'	40.81'
85	17°11'20"	270.00'	81.00'	40.81'
86	13°30'13"	270.00'	65.21'	32.78'
87	80°54'55"	15.00'	21.18'	12.79'
88	90°00'00"	15.00'	23.58'	15.00'
89	93°40'33"	15.00'	25.05'	16.58'
90	12°15'02"	470.00'	100.22'	50.30'
91	8°51'25"	470.00'	72.85'	36.40'
92	15°14'50"	230.00'	61.21'	30.79'
93	11°42'48"	230.00'	47.02'	23.59'



SEE PAGE 49-3

EASEMENTS SHOW ARE ALL 7' WIDE AND ARE UTILITY AND DRAINAGE EASEMENTS

FOR COMPLETE ENG. DATA SEE ORIG. DED. PLAT IN BOOK 20, PAGE 9

W.F.J. 1-77